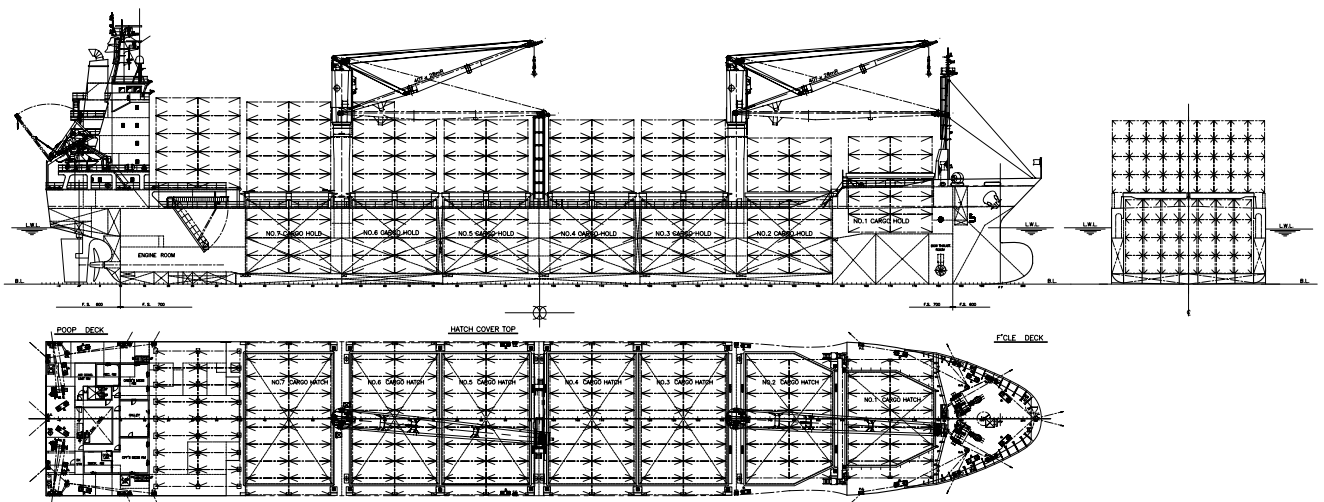


**845 TEU TYPE GEARED CONTAINER CARRIER / KYOKUYO SHIPYARD**  
PROJECT No. A-5803

December/2006

<b>SHIP TYPE</b>	Container carrier	
<b>MAIN DIMENSION</b>	Length over all	abt. 144.80 m
	Length betw. perp.	134.00 m
	Breadth mld.	22.40 m
	Depth mld.	11.00 m
	Designed draft mld.	6.70 m
	Scantling draft mld.	8.20 m
<b>DEADWEIGHT</b>	abt. 8,300 MT at d = 6.70 m	
	abt. 12,000 MT at d = 8.20 m	
<b>COMPLEMENT</b>	20 persons	
<b>KIND OF CARGO</b>	Dry container, Ref.container on hatch cover/deck and in No.3-6 holds (Ref.plug : 120FEU) (9'-6" height cont. at 3rd or 4th tier in No.2 ~ 7 holds)	
<b>CONTAINER CAP.</b>	On deck : 527 TEU (*)	
	In hold : 318 TEU	
	Total : 845 TEU	
	(*) at scantling draft of even keel	
<b>CNTR STABILITY</b>	abt. 470 TEU × 14t (homogeneous) at design draft	
	abt. 595 TEU × 14t (homogeneous) at scantling draft	
<b>SERVICE SPEED</b>	abt. 18.0 knots at design draft & C.S.O. with 15% sea margin	
	abt. 17.3 knots at scantling draft & C.S.O. with 15% sea margin	
<b>MAIN ENGINE</b>	1 – MAN B&W 6L50MC MK-5 M.C.O. 7,980kW (10,860PS) × 148 rpm C.S.O. 7,182kW (9,770PS) × 142.9 rpm	
<b>CARGO GEAR</b>	2 – elect-hyd. single deck crane 40t × 28m radius	



**Kyokuyo Shipyards Corporation**  
8-7, Minatomachi, Chofu, Shimonoseki-city 752-0953, Japan  
Phone +81-832-461291 Fax +81-832-454130



REGISTERED FIRM  
ISO 9001

RvA