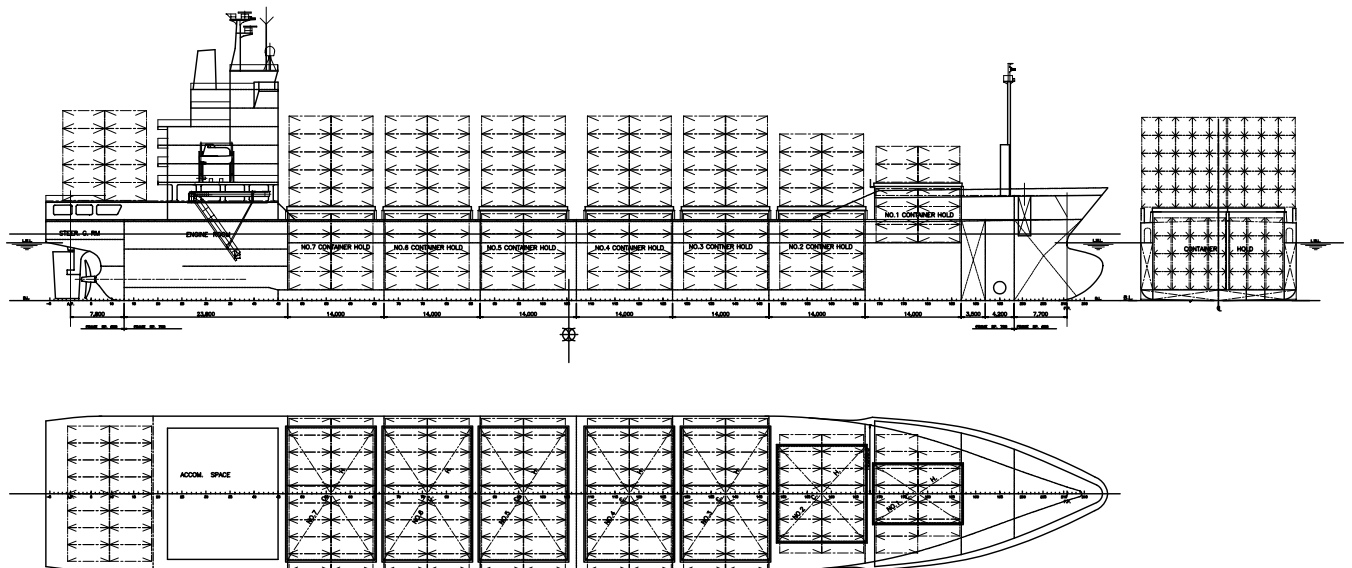


890 TEU TYPE CONTAINER CARRIER / KYOKUYO SHIPYARD
PROJECT No. A-5758

JULY/2003

SHIP TYPE	Container carrier
MAIN DIMENSION	Length over all abt. 154.50 m Length betw. perp. 145.00 m Breadth mld. 22.60 m Depth mld. 11.40 m Designed draft mld. 8.10 m Scantling draft mld. 8.40 m
DEADWEIGHT	abt. 9,800 MT at d = 8.10 m abt. 10,500 MT at d = 8.40 m
COMPLEMENT	22 persons
KIND OF CARGO	Dry & ref. containers (Ref.plug : 150pcs on deck) (3rd & 4th tiers in hold : 9'-6"height)
CONTAINER CAP.	On deck : 610 TEU (*) In hold : 280 TEU Total : 890 TEU (*) at scantling draft of even keel
CNTR STABILITY	510 TEU × 14 t (homogeneous) at design draft 540 TEU × 14 t (homogeneous) at scantling draft
SERVICE SPEED	abt. 21 knots at design draft = 8.10 m & C.S.O. with 15% sea margin
MAIN ENGINE	1 -MAN B&W 8S50MC MK-6 M.C.O. 11,440kW (15,520 PS) × 127rpm C.S.O. 10,296kW (13,968 PS) × 123rpm



Kyokuyo Shipyards Corporation
8-7, Minatomachi, Chofu, Shimonoseki-city 752-0953, Japan
Phone+81-832-461291 Fax+81-832-454130

